

MOD-FCSKIT300(-B)



Display size  
**39"-75"**



Max load  
**132lb (60kg)**  
Per Display

# Modular Series Floor-to-Ceiling Kit

FOR 39" TO 75" DISPLAYS

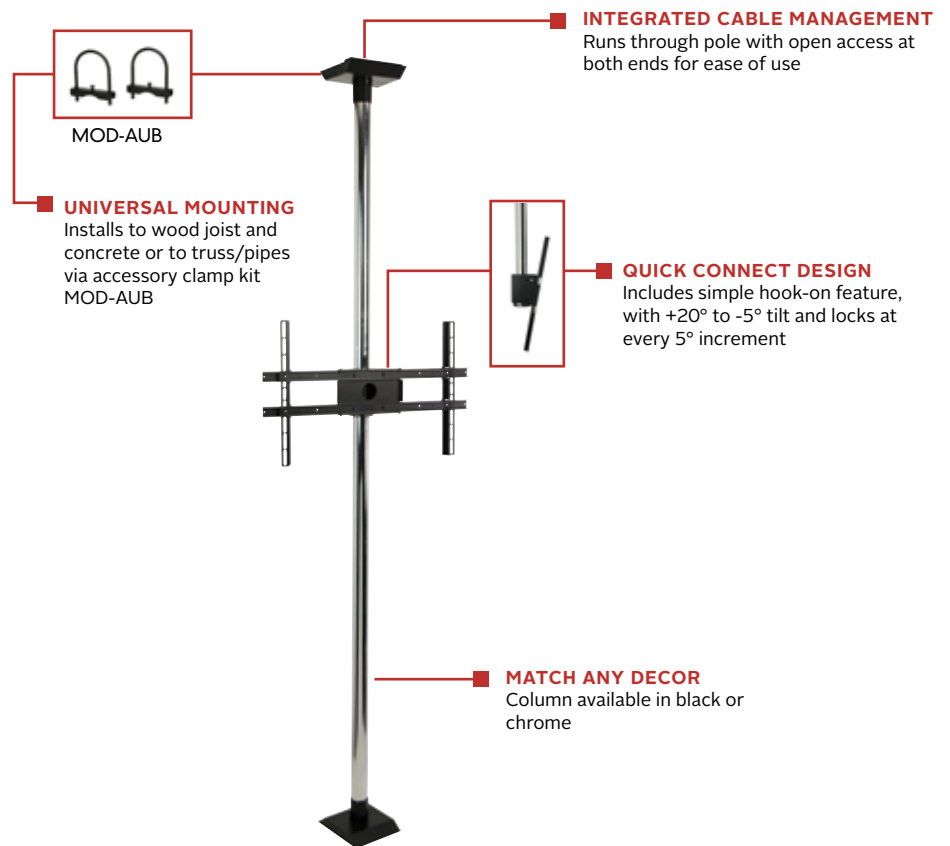
The Peerless-AV® Modular Mount Line includes a small and easily manageable number of components to fulfill a vast majority of end-user requirements. Designed around a 2" (50mm) diameter pole, the line is ideal for new projects as well as upgrading existing installations. As part of the Peerless-AV Modular Series, the MOD-FCSKIT300 includes all components required to mount a 39"-75" flat panel display. This kit can be expanded with Modular accessories to accommodate additional displays or alternative configurations to achieve the perfect custom mounting solution.

*The Modular Mount Line includes universal components making it easy to design perfect custom flat panel display or projector mounting solutions for any application.*



## Additional Features

- ✓ Kit includes:
  - Flat ceiling/floor plates
  - 118" (3m) chrome or black extension column
  - Single display flat panel mount
  - Display stacking clamp
  - Large universal adaptor
- ✓ Heavy duty flat plate mounts to wood or concrete ceiling and floor
- ✓ Universal display adaptor for 39" to 75" displays with VESA® mounting patterns up to 600 x 400mm
- ✓ Versatile display positioning at any point along the height of the 2" (50mm) diameter column



Tilt bracket



Accessory Cover for MOD-CPF Ceiling Plate



MOD-FCSKIT300(-B) Modular Series Floor-to-Ceiling Kit for 39" to 75" Displays

**Product Specifications**

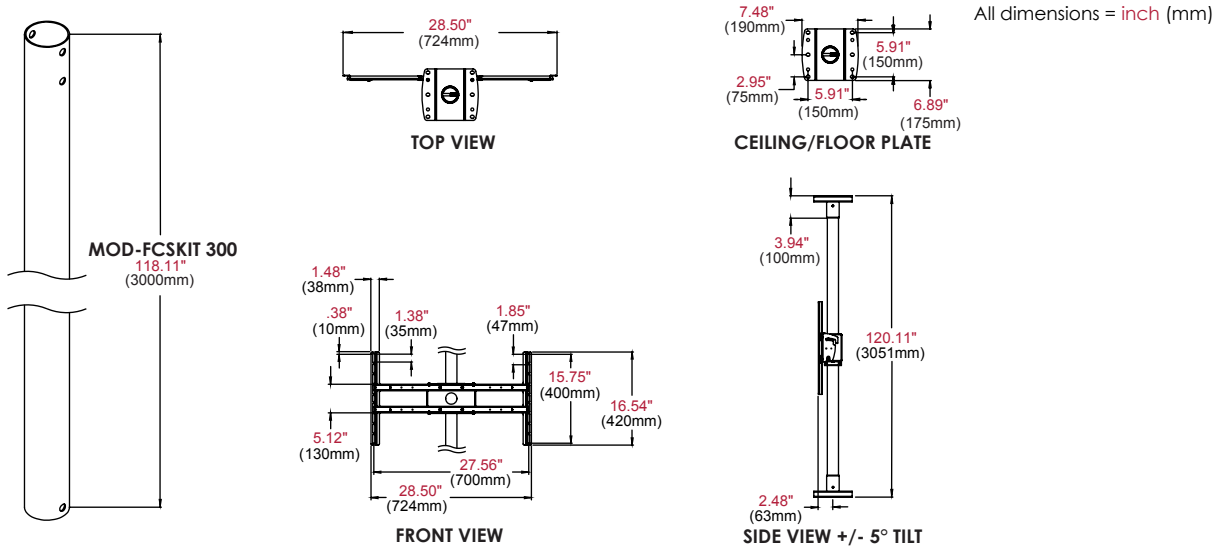
	DIMENSIONS (W X H X D)	PRODUCT WEIGHT	LOAD CAPACITY	FINISH	AVAILABLE COLORS
MOD-FCSKIT300(-B)	28.50" x 120.11" x 7.48" (724 x 3051 x 190mm)	26.3lb (11.9kg)	132lb (60kg) per display	Powder Coat	MOD-FCSKIT300: Black/Chrome  MOD-FCSKIT300-B: Black

**Package Specifications**

	PACKAGE SIZE (W X H X D)	PACKAGE SHIP WEIGHT	PACKAGE UPC CODE	PACKAGE CONTENTS	UNITS IN PACKAGE
MOD-FCSKIT300(-B)	BOX 1: 31.75" x 12.26" x 4.13" (807 x 311 x 105mm)  BOX 2: 120.00" x 2.50" (3048 x 64mm)	BOX 1: 15.7lb (7.1kg)  BOX 2: 15.5lb (7.0kg)	MOD-FCSKIT300: 735029282532  MOD-FCSKIT300-B: 735029290162	- 2 each MOD-CPF heavy duty flat ceiling plate  - MOD-P300 118" (3m) extension pole  - MOD-ASC display stacking clamp  - MOD-FPMS single screen mount  - MOD-UNL large universal adaptor	1

**Accessories**

- MOD-ACF(-W):** Accessory Cover for MOD-CPF Ceiling Plate
- MOD-ADF:** Accessory Drill Fixture for 50mm Pole
- MOD-APC:** Accessory Pole Coupler
- MOD-ASC:** Accessory Screen-Stacking Clamp
- MOD-ATD-W:** Accessory Trim Disc
- MOD-AUB:** Accessory U-Bolt Adaptor
- MOD-CPC(-W):** Ceiling Plate, Cathedral
- MOD-CPF:** Square Ceiling Plate, Flat (7.4" x 6.8")
- MOD-CPI:** I-Beam Ceiling Plate, Flat
- MOD-FPMD:** Flat Panel Mount, Dual Back-To-Back
- MOD-FPMS(-W):** Flat Panel Mount, Single
- MOD-P100(-B):** 50mm Extension Pole - 39" (1.0m)
- MOD-P150(-B):** 50mm Extension Pole - 59" (1.5m)
- MOD-P200(-B):** 50mm Extension Pole - 78" (2.0m)
- MOD-P300(-B):** 50mm Extension Pole - 118" (3.0m)
- MOD-UNL:** Universal Screen Adaptor, Large
- MOD-UNM:** Universal Screen Adaptor, Medium



All dimensions = inch (mm)

**Architect Specifications**

The Modular Series Floor-to-Ceiling Kit shall be a Peerless-AV model MOD-FCSKIT300(-B) and shall be located where indicated on the plans. Assembly and installation shall be done according to instructions provided by the manufacturer.

Visit [peerless-av.com](http://peerless-av.com) to see the complete line of AV solutions from Peerless-AV, including outdoor displays, wireless, kiosks, digital audio, display mounts, projector mounts, carts/stands, and a full assortment of accessories.

**Peerless-AV**  
2300 White Oak Circle  
Aurora, IL 60502 USA  
  
**(800) 865-2112**  
**(630) 375-5100**  
**Fax: (800) 359-6500**

**Peerless-AV Europe**  
Unit 3 Watford Interchange  
Colonial Way, Watford  
Herts, WD24 4WP  
United Kingdom  
**+44 (0) 1923 200100**  
**Fax: +44 (0) 1923 200101**

**Peerless-AV de México**  
Ave de las Industrias 413  
Parque Industrial Escobedo  
Escobedo, N.L.,  
Mexico 66050  
**+52 (81) 8384-8300**  
**Fax: +52 (81) 8384-8360**

